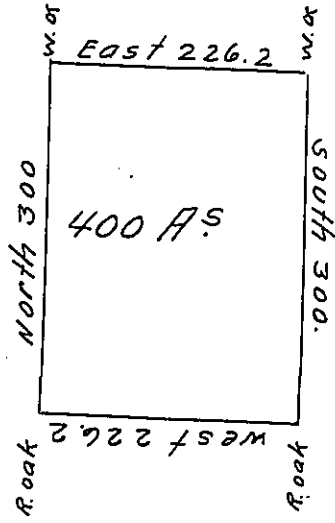


Donation Land

John Eddie



Sam'l Shannon

John Rutter

The Above is the draft of a Survey made March 12<sup>th</sup> 1795 in pursuance of a Warrant granted W<sup>m</sup> Mutkirk on the 4<sup>th</sup> day of Jan'y 1794. Situate north west of the River Ohio on the Waters of Beaver Creek. Adjoining Land granted to John Eddie. Called Belpra. Containing 400 Acres together with Six pr. Cent allowance.

Tho. Stokely D. S.

Daniel Brodhead Esq<sup>r</sup> S. G.

IN TESTIMONY that the above is a copy of the original remaining on file in the Department of Internal Affairs of Pennsylvania, made conformably to an Act of Assembly approved the 16th day of February, 1833, I have hereunto set my Hand and caused the Seal of said Department to be affixed at Harrisburg, this nineteenth day of January 1906.

*Loac A Brown*  
 Secretary of Internal Affairs.